

YORK Flashings™

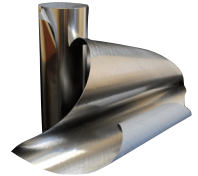
Your Flashing Authority

W&D = Window & Door
TWF = Through-Wall Flashing
TM = Transition Membrane

Commercial

Stainless Steel

TWF **Multi-Flash™SS:** a flexible, non-self-adhering, 2 mil sheet of Type 304 stainless steel laminated on one side with a tough cross-woven polymer. Multi-Flash™SS has an outward-facing bare stainless steel face that offers excellent compatibility and is a great surface for sealants and adhesives to adhere to.



TWF **York 304 SA:** a flexible, self-adhering, 2 mil sheet of Type 304 self-adhering stainless steel and butyl adhesive. York 304 SA has superior performance characteristics and greater longevity compared to traditional peel-and-stick through-wall-flashings and transition membranes. The bare stainless steel face offers excellent compatibility and is a great surface for sealants and adhesives to adhere to.

W&D
TM



TWF **Flash-Vent™SS:** a flexible, non-self-adhesive, 2 mil sheet of Type 304 stainless steel laminated on one side with a tough cross-woven polymer and an active drainage fabric on the opposite side. Flash-Vent SS acts as a continuous weep that actively drains moisture from the wall.



TWF **Flash-Vent™SA:** a flexible, self-adhering, 2 mil sheet of Type 304 stainless steel with butyl adhesive on one side and an active drainage fabric on the opposite side. Flash-Vent™ SA acts as a continuous weep that actively drains moisture from the wall. This is York Flashings' top pick as a through-wall flashing.



Copper

TWF **Multi-Flash™500:** a flexible, 3oz., 5oz., or 7oz. sheet of copper laminated on both sides with a tough cross-woven polymer. Multi-Flash™500 copper fabric flashing comes with a life of the wall warranty.



TWF **Flash-Vent™Copper:** a flexible 3oz. or 5oz. sheet of copper laminated on one side with a tough, cross-woven polymer and an active drainage fabric on the opposite side. Flash-Vent™ Copper acts as a continuous weep that actively drains moisture from the wall.



Butyl Membrane

TWF **Wicked Good Flashing™:** a 40 mil thick butyl membrane that features an extra-tough abrasion-resistant facer (ARF) that provides 6 months of UV protection, offers excellent compatibility, and is a great surface for sealants and adhesives to adhere to. The butyl adhesive allows for a primeless installation which provides savings on material and labor.

W&D
TM



W&D **MaxSeal™**: a self-adhering butyl composite membrane that provides a superior barrier to limit air and moisture transmission. MaxSeal™ is used as a fenestration flashing that is compatible in masonry, curtain walls, construction joints and fittings, and around doors and windows.



TWF **Flash-Vent™ Max**: a self-adhering butyl composite membrane with an active drainage fabric laminated to one side. Flash-Vent Max acts as a continuous weep that actively drains moisture from the wall.

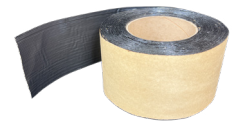


Asphalt Membrane

TWF **York Seal**: a 40 mil, self-adhering, rubberized asphalt membrane. The modified asphalt offers the waterproofing effectiveness of traditional modified bitumen products with low-temperature adhesion.

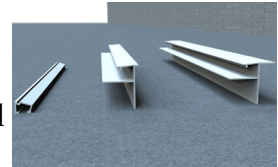


W&D **Home Seal™**: a 20 mil, self-adhering, rubberized asphalt membrane that is a barrier to limit air and moisture transmission.



Accessories

AirSill™: a two-piece flashing receiver that offers a quicker, more effective method for attaching fenestration perimeter flashing and creates flexibility in construction sequencing. This alternative method also allows you to install your flashings without interrupting critical seals and prevents thermal bridging.



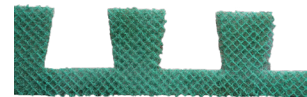
Weep-Armor™: a polyester fabric that keeps mortar droppings, dirt, and debris from clogging the weep vents while still allowing a path for water to exit the wall and promoting air flow.



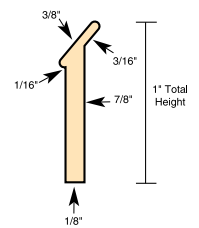
York Wrap™: a non-adhesive isolation tape that is a flexible sheet of cross-woven polyethylene designed to isolate pressure-treated lumber from galvanized metals to prevent the corrosive effects of incompatible materials. YorkWrap™ provides joist moisture protection and an isolation barrier between the joists and the decking.



Weep-Net™: a draining mesh material made of polymer strands. The dovetailed design prevents mortar droppings from clogging the weep vents when the material fills the entire air space in a wall cavity.



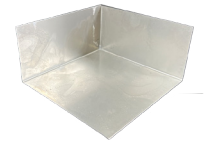
Termination Bar T-96: a rigid thermoplastic bar used to mechanically fasten flashing materials, drainage boards, waterproofing membranes, and many other items requiring a termination point. It has both positioning and sealant lips to help with ease of installation.



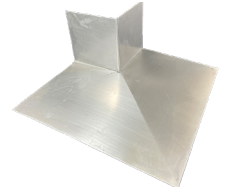
SS Termination Bar: a 26-gauge type 304 stainless steel bar used to mechanically fasten flashing materials, drainage boards, waterproofing membranes, and many other items requiring a termination point. It has a sealant lip and 1/4\"/>



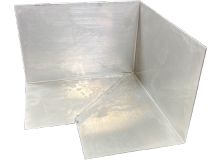
End Dams: a prefabricated, 26-gauge, Type 304 stainless steel spot welded and soldered piece that is recommended with all York's flashing products.
Dimensions: 2"H x 4"D x 4"W



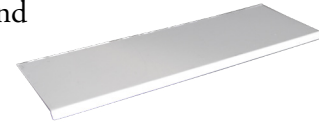
Outside Corner: a prefabricated, 26-gauge, Type 304 stainless steel spot welded and soldered piece that is recommended with all York's flashing products.
Dimensions: 4"H x 6"D x 10"W



Inside Corner: a prefabricated, 26-gauge, Type 304 stainless steel spot welded and soldered piece that is recommended with all York's flashing products.
Dimensions: 4"H x 6"D x 6"W with a 2" notch



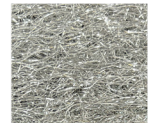
Drip Edge: a prefabricated, 26-gauge, Type 304 stainless steel piece designed to extend the UV sensitive flashings to the exterior veneer. Dimensions: 3"W x 8'L x 1/4" 30 degree hemmed outside edge



Drip Edge Corners: a prefabricated, 26-gauge, Type 304 stainless steel spot welded and soldered piece that is used in conjunction with a straight drip edge for a safer and easier installation.



SS Weep Vents: Type 316 stainless steel wool that will last the life of the building.



UniverSeal US-100: a polyether-based, moisture curing elastomeric sealant. It forms a seamless, monolithic exterior working surface that will keep the structure watertight. US-100 contains no VOCs or solvents.



York Flashings
43 Community Drive
Sanford, ME 04073

800-551-2828
info@yorkmfg.com
yorkflashings.com

Specializing in transition membranes and through-wall flashing, York has been inventing and producing flashings since 1935. As the leader in commercial and residential flashing industry, York has led the charge to create flashings that are compatible with the air barriers and insulations that populate the cavity wall.